



# Sealed Beam Fast Inflation Shelter

## Product Information Pack

---

I.C. Brindle Contact Details: I.C. Brindle & Co. Ltd  
Unit 4, The Glenmore Centre, Fancy Rd  
Tel: 01202 657814  
Email: [info@icbrindle.com](mailto:info@icbrindle.com)





Supplying:



Introducing the 'ICB Air' series Sealed Beam Fast-Inflation Shelter from I.C. Brindle, your ultimate solution for rapid deployment and versatile usage in various scenarios.

Crafted with detail and precision using the latest flame-retardant, waterproof, and water-repellent materials—our latest 'Mk III' shelters are engineered to meet your exact requirements to perform during your desired applications.

Every fast-inflation shelter includes standard features such as vehicle flaps, triple layer windows, FR, wipe clean PVC, and fly mesh. Connectable zips, a comprehensive repair kit, guy ropes, heavy-duty stakes, a clear pocket pouch and safety hazard stripe markings on entrances. CAD drawings provided for customisation, with on-site training also available.

Our shelters are made from robust and versatile materials to ensure durability and resilience. Utilising a tough FR canopy material, our shelters offer superior defense against harsh weather conditions. The base fabric features an 8x8 plain weave structure with high-tenacity 1300 D flat yarns, enhancing strength and stability.

Transparent 0.50mm PVC film for the windows provides visibility, while maintaining weather protection. The airtight sealed frame, constructed from 1140g/sqm Black Plato PVC, ensures stability in challenging conditions.

A combination of inflation / deflation, sensor and over pressure valves (located together on the outside of the shelter for easy air flow regulation) maintain structural integrity of the shelter, whilst ensuring easy set-up or packing away.

Additionally, a polyester fabric with PU polymer coating enhances waterproofing. These materials combine to create a rapid-deployment shelter that is durable, fire and water-resistant, all whilst being structurally sound in a wide range of challenging hot, cold, or windy environments.





## Key Features:

- Flame-retardant canopy
- Waterproof with glued, stitched, and taped seams
- Welded black plato PVC beams, 250mm-330mm acc. to shelter size
- Large vehicle flaps for hard surface anchoring
- 3-layer Windows on each side - FR / PVC / Fly-mesh
- Clear PVC covers for light and privacy
- Connectable full-sized doors
- Connectable shelter zips
- Inflation/deflation valves with over pressure valve
- Pressure sensor valve for continuous regulation
- All valves located in a row on outside of shelter
- 'D' rings for accessory attachment
- Service port at each end
- Full repair kit and heavy-duty stakes included
- Yellow and black chevron design at entrances
- Rain gutter around doors
- Carry bag with four handles
- Clear PVC pouch at each door

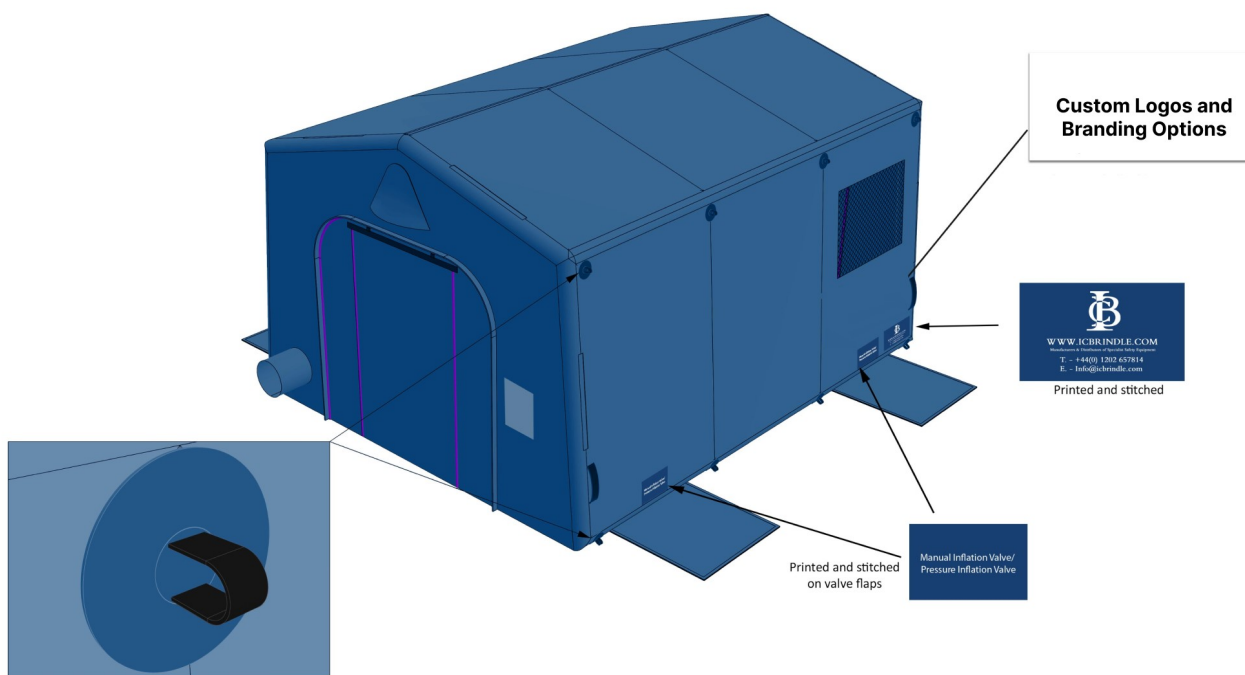
## Applications:

- Medical Triage and Field Hospitals
- Military Operations (Command Centres)
- Search and Rescue Missions
- Humanitarian Relief Efforts
- Crime Scene Preservation
- Airport Emergency Response



# Fast Inflation Shelters

## Bespoke Shelter Options



Green



Blue



Red



Orange



White



Yellow



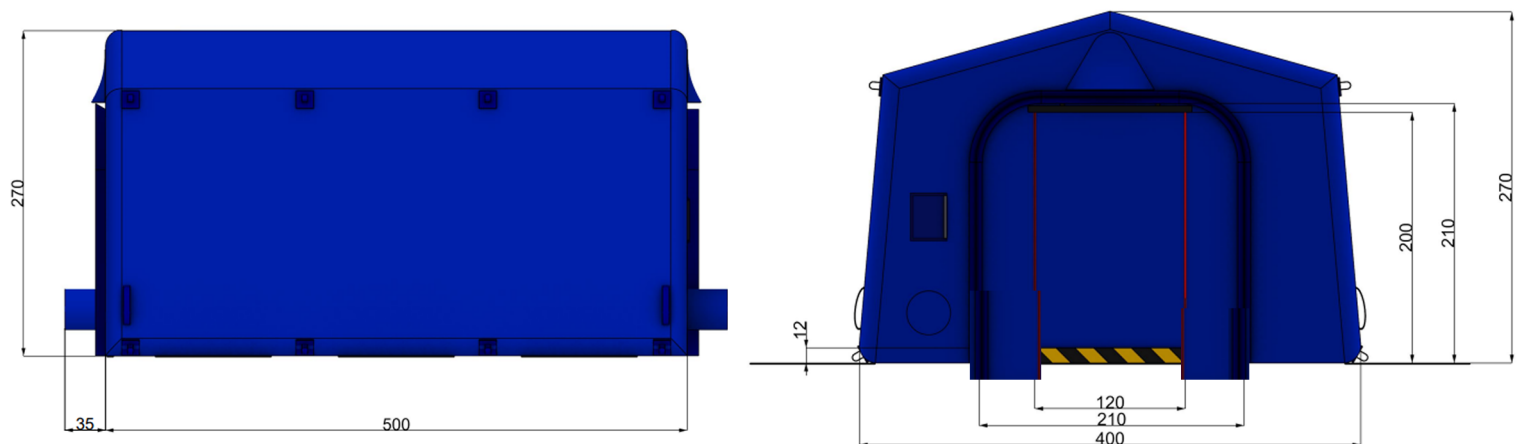
**\*More Colours Available Upon Request!**



## Technical Data

Product Code	ICB33	ICB34	ICB44	ICB45	ICB56	ICB58	ICB68
Shelter (m)	3x3m	3x4m	4x4m	4x5m	5x6m	5x8m	6x8m
Length (cm)	300cm	300cm	400cm	400cm	500cm	500cm	600cm
Int. Length (cm)	300cm	300cm	400cm	400cm	500cm	500cm	600cm
Width (cm)	300cm	400cm	400cm	500cm	600cm	800cm	800cm
Int. Width (cm)	250cm	350cm	446cm	446cm	543cm	734cm	734cm
Height (cm)	260cm	260cm	270cm	270cm	280cm	300cm	300cm
Int. Height (cm)	235cm	235cm	243cm	243cm	251.5cm	267cm	267cm
Beam Size (cm)	25cm	25cm	27cm	27cm	28.5cm	33cm	33cm
Working Pressure (r)	1.4	1.4	1.4	1.4	1.4	1.4	1.4
Packed Size (cm)	0.9x0.69x0.61m	0.9x0.69x0.61m	1x0.76x0.67m	1x0.76x0.67m	1.1x0.80x0.74m	1.1x0.80x0.74m	1.2x0.80x0.74m
Weight (kg)	60kg	65kg	70kg	95kg	140kg	195kg	225kg

## CAD + Dimensions (Example shown below is based on a 4×4m Shelter)



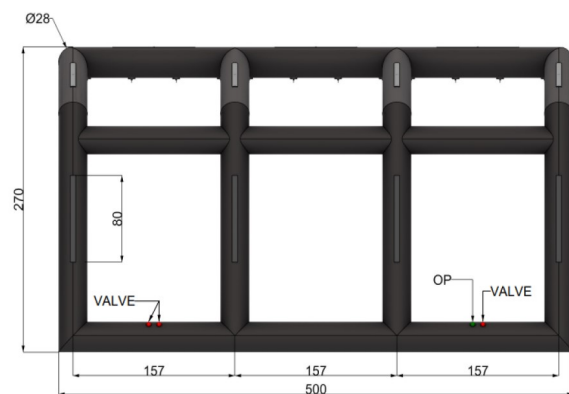
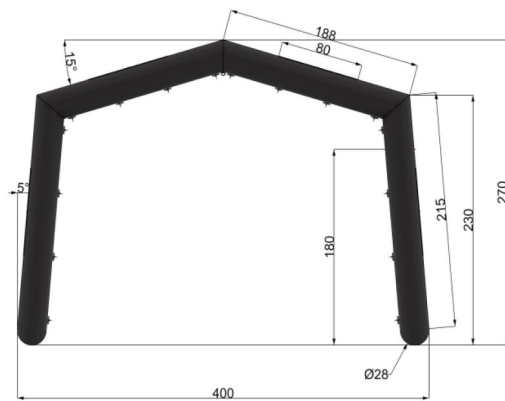
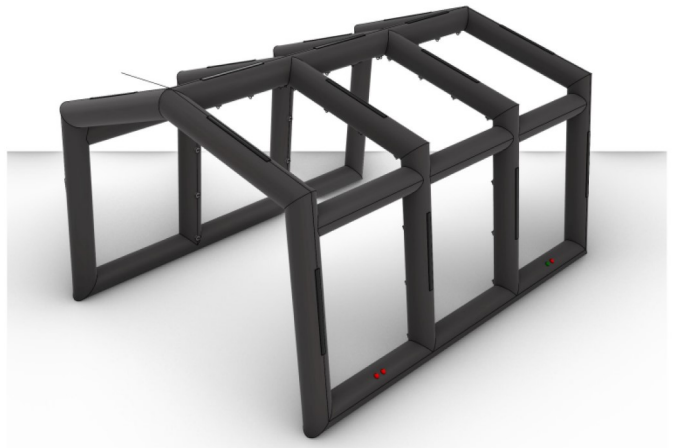
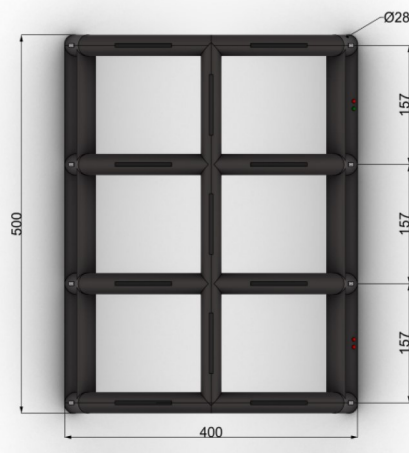
### Supplied with:

- 3-layer windows (FR / Wipe Clean PVC / Fly-mesh)
- Service port at each end
- Clear PVC pouch at each door
- Carry bag with four handles
- Full repair kit and heavy-duty stakes included

### Customisation:

- Canvas Colour
- Logos and Branding
- Additional windows / doors + location
- Heating and Lighting options
- Power Generators

## PVC Beam Dimensions



**The Airtight sealed frame plays a crucial role in the rapid deployment and stability of the shelter, making it an ideal solution for emergency response, outdoor applications, and temporary bases or accommodations.**

The Fast-Inflation Shelter incorporates a robust framework engineered for optimal performance and durability. At its core lies the Airtight Sealed Frame, crafted from high-quality Black Plato Beam PVC. This specialised material ensures exceptional strength and longevity, capable of withstanding various environmental conditions. With a weight of 1140 grams per square meter, the PVC tubing offers superior stability without compromising on portability.

The structural integrity and dependable support of the Fast-Inflation Shelter are the result of careful design considerations. Specifically, the offset joints of the tubes have been strategically engineered to provide additional reinforcement to the wall and roof sections of the shelter. This deliberate tubing design feature enhances the stability and robustness of the shelter's frame, ensuring reliable performance even in challenging conditions.

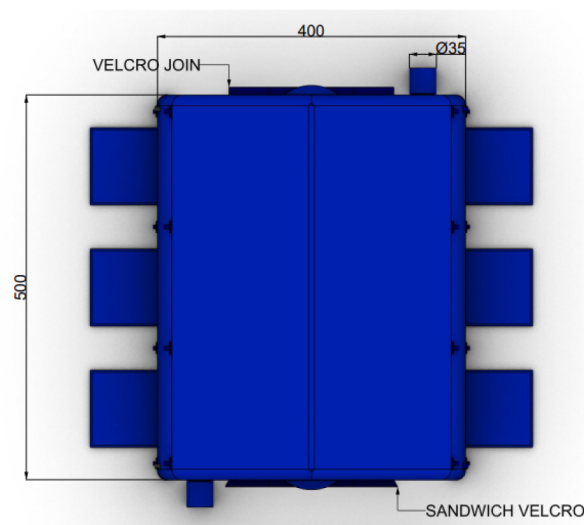
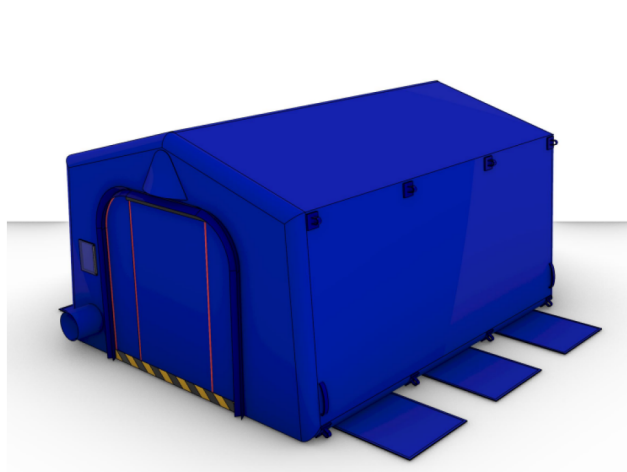
The connection points of the tube, combined with optimally located valve systems ensures the shelter to withstand various environmental factors such as heavy rain and wind, or air pressure changes due to temperature without fear of the canopy collapsing—offering peace of mind and security in any setting.



## Material Specification

Component	Material	Approvals / Certs
Canopy	Polyester, 550 Dtex, PU Polymer Coating 240 g/m2	Certified to B1 (DIN 4102), BS 7837, M2 (NPF 92-507). Flame-retardant, printable, waterproof, and water-repellent.
Windows	Transparent PVC Film Standard width: 137 cm, Thickness: 0.50mm	Flame Retardant EN1176-10, NFPA-701, CSFM, B1 Standard, Anti mildew, Fungicide / Biocide, Safety, UV Stabilised, and 6 'P' harmful heavy metals free. DIN 4102-15 & 16
Floor, Walls & Ceiling	PVC-coated polyester fabric, Gloss 630g, 8×8 plain woven, high-tenacity 1300D yarns. Standard width 152cm	EU flame-retardant, anti-mildew, anti-fungal Reach, RoHS, UV stabilised, lead-free, CFC-free. Conforms to BS EN ISO 2286:1998, BS EN ISO 1421:1998, BS 3424:1982, BS 3424:1983, ISO 1928:1995, BS 1006:1990, and EN 71-2:2020
Beams	Black Plato Beam PVC, Airtight Sealed Frame, 1140 gr/sqm	-

## CAD + Dimensions (Example shown below is based on a 4×5m Shelter)



## Inflations Options

The Fast-Inflation Shelter offers a comprehensive selection of inflation and deflation pumps, each designed to meet specific needs and preferences.

From the portable Bravo Turbo Max 12V Electric Pump ideal for professional use, to the versatile Bravo GE OV10 110V and 230V pumps, each equipped with anti-sand filters for smooth operation in challenging environments.

For maximum performance, the Bravo 230V 230/2000 Pump combines a main motor with a booster motor, offering rapid inflation capabilities perfect for larger structures like our 4mx5m and above inflatable shelters—which can be fully inflated in under 5 minutes.

The GE 120/2000 A.R.S. Electric Pump takes convenience to the next level with its Automatic Refilling System, ensuring consistent pressure levels without the need for manual monitoring or adjustments. With adjustable pressure settings catering to various requirements, these pumps and cylinders guarantee peak performance for the our sealed-beam fast inflation shelters, providing efficiency and reliability when it matters most.

**Bravo GE OV10 230V**



**12v Bravo Turbo Max**



**Bravo GE OV10 110V**



**Bravo GE OV10 230V**



**GE 120/2000 A.R.S.**



**Cylinder Inflation Hose System**





## Lighting Options

Illuminate your shelter with ease using our cutting-edge lighting options tailored for your ICBair Fast-inflation Shelters. Choose between the ALDEBARAN® SMARTLINE SERIES 110V lighting system or the versatile Lithium Ion rechargeable battery lights, both boasting an impressive approximate lifespan of 50,000 hours.

The ALDEBARAN® SMARTLINE SERIES 110V lights harness modern LED technology to deliver 6500 lumens per unit, ensuring ample illumination for your shelter. Designed for longevity and cost-effectiveness, these lights provide reliable performance for extended periods.

### 110v Shelter Lighting



Electrical Data	SmartLine RP110 LED Basic	SmartLine RP110 LED Basic
Input voltage	100 - 240 V AC	100 - 240 V AC
Power consumption	65 W	65 W
Photometric Data		
Illuminant	LED-Strip-Technology	LED-Strip-Technology
Luminous flux approx.	6.500 lm	6.500 lm
Colour temperature	4000 °K   5000 °K	4000 °K   5000 °K
CRI	> 80	> 80
Life time approx.	50.000 hrs	50.000 hrs
General Data		
Ambient temperature	-25 °C to +50 °C	-25 °C to +50 °C
Dimension (LxWxH) approx.	750 x 150 x 82 mm	750 x 150 x 82 mm
Weight approx.	3,5 kg	3,5 kg
IP code	IP54	IP44
Plug	Schuko IP68 green	Schuko IP44
Socket (opposite)	Schuko IP68 green	Schuko IP54

## Lighting Options

Alternatively, opt for the Lithium Ion rechargeable lights, which utilise state-of-the-art battery technology to offer multi-hour usage even in areas without a power source. Featuring the SETO COMBAT design, these lights offer tactical switching between light colours (cool, warm, and neutral white) to suit various applications. Additionally, the direction of light (lateral or central radiation) can be independently controlled, and intensity can be adjusted in three stages for optimal illumination.

### Lithium Ion Rechargeable Lighting

- ✓ Highly flexible, tactical light
- ✓ Color switching and dimming function
- ✓ Up to 4.000 lumens
- ✓ 7.5 - 78 h battery life
- ✓ Dimensions 296 x 100 x 36 mm
- ✓ Power bank function

Item no: 1424000022



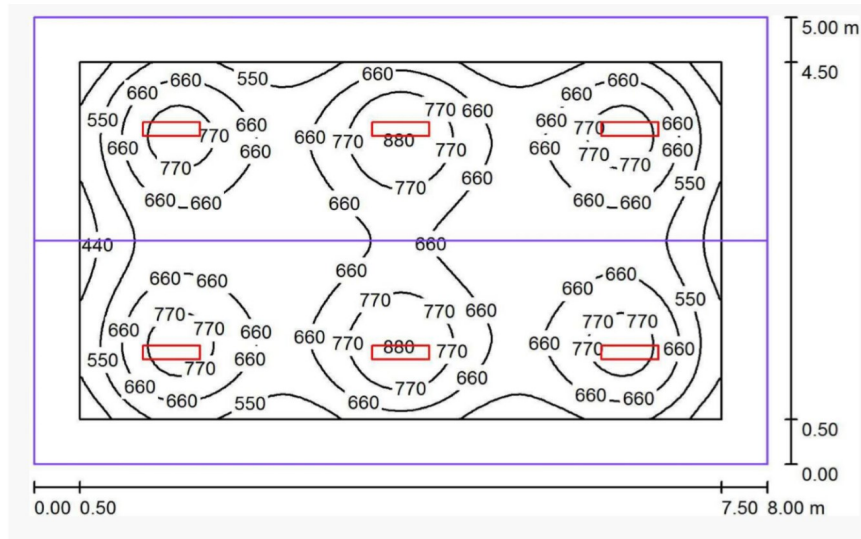
General Data	Electrical data	Lighting data
Model	X1	
Dimensions	229x100x36 mm	
Weight	0,598 kg	
Front Window	Milky	
IP Class	IP54	
Light Functions	Dimmable, ww/nw/cw Switch, Powerbank	
Brand	SETO	
Series	COMBAT	

General Data	Electrical data	Lighting data
Input Voltage	12,6 V	
Type of Current	DC	
Protection Class	III	
Operating Time (High Level)	6,5 h	
Operating Time (Low Level)	78 h	
Charge Time	3 h	
Charger	Li-ION, 3,6V, 15,600 mAh	

General Data	Electrical data	Lighting data
Luminant	LED	
Luminous Flux (real)	3.200 lm	
Colour Temperature	3000 / 4200 / 6200 K	



## Illumination Coverage



The above diagram shows the light coverage of 6 units in an 8m x 5m shelter, we would suggest 4 lights for a 6m x 5m shelter and 2 units to illuminate a 5m x 3m shelter.



With convenient mounting options including hooks, carabiners, and side straps, these lights offer flexibility and ease of installation, ensuring your shelter remains well-lit and functional in any environment. Illuminate your space efficiently and effectively with our innovative shelter lighting solutions.

## Shelter Heating

### Direct Fan Heater(Available in 230v & 110v)



Reliable and durable heating solutions tailored for harsh environments with our extra tough units designed to withstand the rigors of regular site use. Ideal for scenarios where temperatures can plummet, such as cold and isolated environments encountered during search and rescue missions, humanitarian relief efforts, and hospital triages, our heating units offer indispensable comfort and safety.

Equipped with an adjustable thermostat and over-temperature protection as standard, our heating units ensure precise control and safety in any setting. The optional spigot feature allows users to fit up to 2 meters of ducting, enhancing flexibility and enabling directed heat distribution where needed most.

An extra tough unit designed and built to with-stand the rigours of regular site use. Features include an adjustable thermostat and over temperature protection as standard while the optional spigot allows the user to fit up to 2m of ducting. Available in 110v 32A and 230v 13A models.

In harsh and challenging conditions, maintaining optimal temperatures is crucial for the well-being and efficiency of personnel and equipment. Our heating units provide a reliable source of warmth, creating a comfortable and conducive environment for prolonged base camp setups during critical operations. Whether it's providing warmth for rescue teams, supporting humanitarian relief efforts, or facilitating medical triages, our heating solutions offer essential support in demanding situations, ensuring that shelters remain functional and occupants remain safe and comfortable.



## Notes