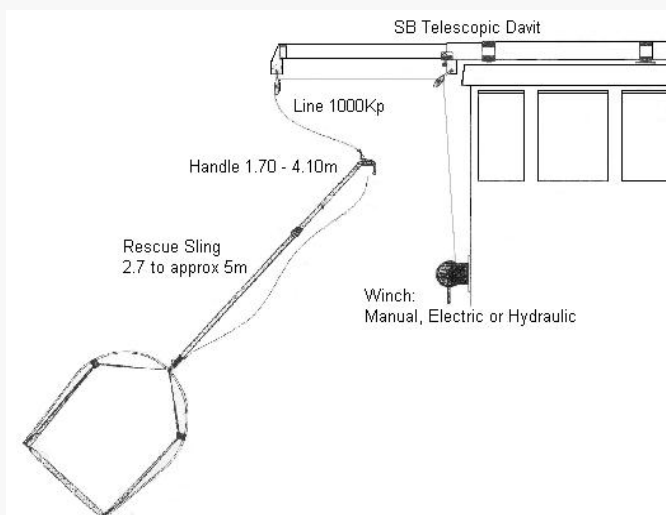


SB RESCUE SLING

SB RESCUE DAVIT

Description

The **SB Rescue Davit** is a telescopic, manually operated davit that may be used in conjunction with the **SB Rescue Sling man overboard system**. The davit enables a fast, effective and efficient man overboard recovery and overcomes the problems of freeboard, rescuer fatigue, lack of crew numbers and the difficulties encountered in recovering a dead weight from the water



The **SB Rescue Davit** is used by Coastguard agencies, Pilot boats, Work boats, Naval vessels and is currently the MOB system of choice for the Norwegian rescue service,



1



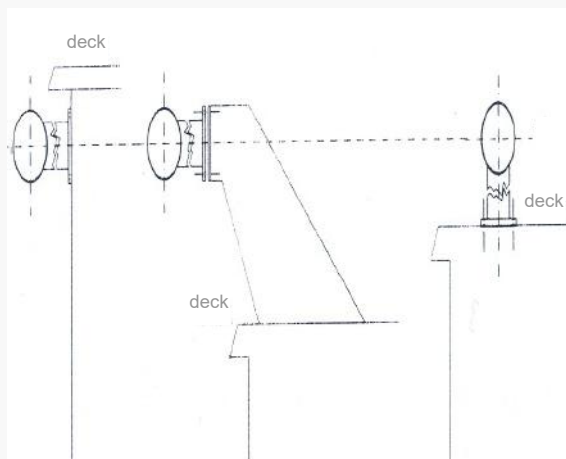
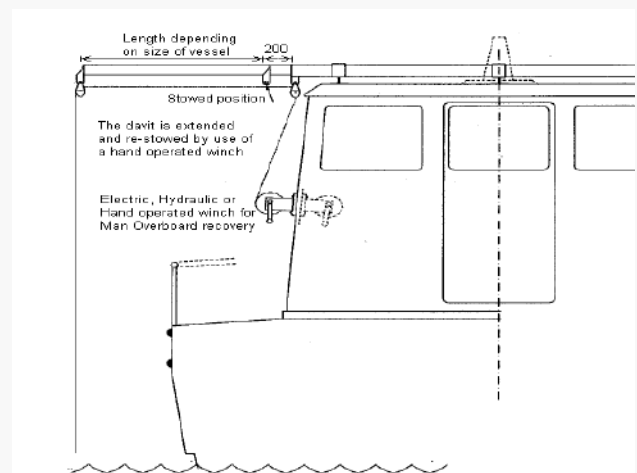
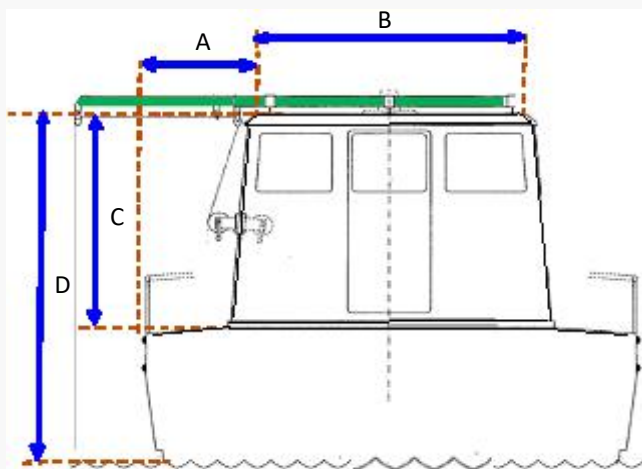
SB RESCUE SLING

SB RESCUE DAVIT

REQUIRED QUOTATION INFORMATION

Each SB Rescue Davit is vessel specific and requires the following information to provide an accurate quotation.

- A) Distance from the davit location to the vessels side
- B) Width available at the mounting position
- C) Height from the working deck to the davit location
- D) Vertical distance from the mounting position to the waterline



Additional Information

- The davit may be deck or bulkhead mounted at any height but for ease of casualty recovery it should be not less than 2200mm above the recovery deck . (i.e. person height + allowance for sling)
- If recovery is required on both sides of the vessel two davits are required
- The davit may be used in conjunction with an electric, hydraulic or manually operated recovery winch
- The body of the davit is manufactured from aluminium and painted in a high quality white with Jotun Penguard Marine Paint