

SB Rescue Sling Accessories

8AFID– Stainless Steel Manual Winch

Description

The 8AFID is a stainless steel manually operated auto braking winch which complies to European standard EN13157 A1 and is also CE and GS certified. The robust construction makes it suitable for a wide range of commercial applications with its materials also being suited to a marine environment.

Specification

- Number of speeds : 1
- Reduction ratio 1 : 1/4.85
- Drum hub \varnothing : 54mm
- Brake : Auto Braking
- Last layer use value : 270kg
- Theoretical value first layer : 650kg
- Rolling load capacity slope 20% : 900kg
- Minimum weight (KG) : 10kg
- Cable 1 \varnothing (mm) / length (m) : \varnothing 6/19m
- Cable 2 \varnothing (mm) / length (m) : \varnothing 5/30m
- Winch weight : 5.5kg
- Number of winches per master pack (pro) : 1
- Handle : Fixed



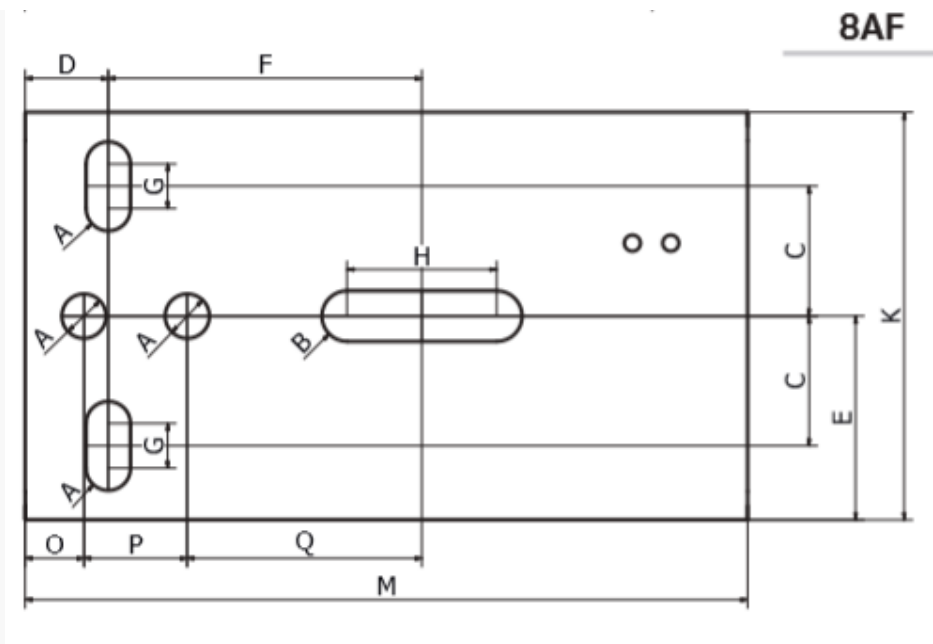
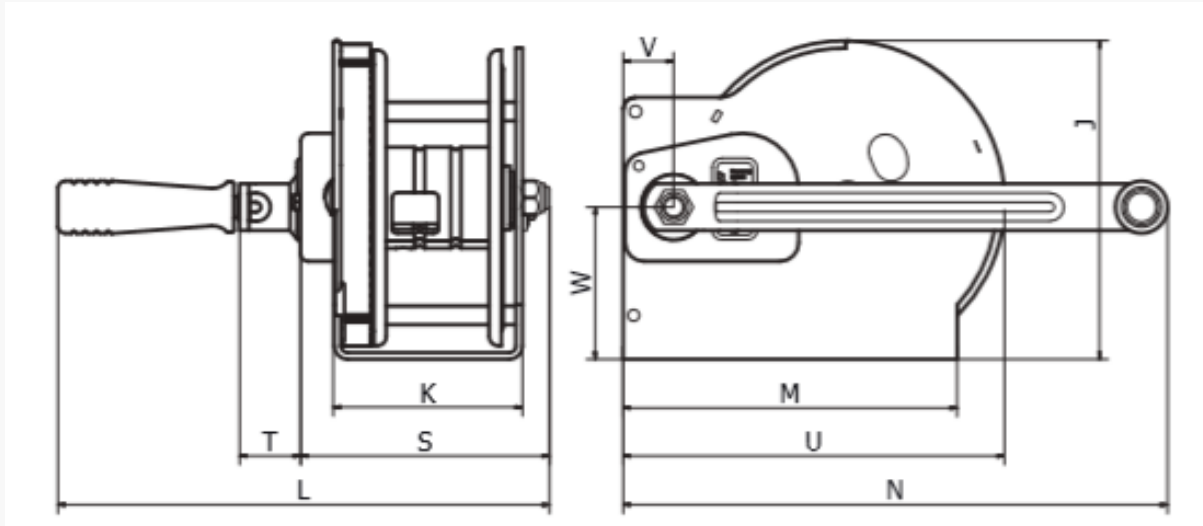
1



SB Rescue Sling

Accessories

St/St Manual Winch



A) 11	G) 11	M) 178,5	S) 132
B) 12,5	H) 37	N) 290	T) 32
C) 32	I) -	O) 14,5	U) 200
D) 20,5	J) 167	P) 25,5	V) 37
E) 50,25	K) 100,5	Q) 58	W) 81
F) 77,5	L) 265	R) -	